

Oklahoma 4-H Crops Judging

2015 Study slides

Crops

alfalfa





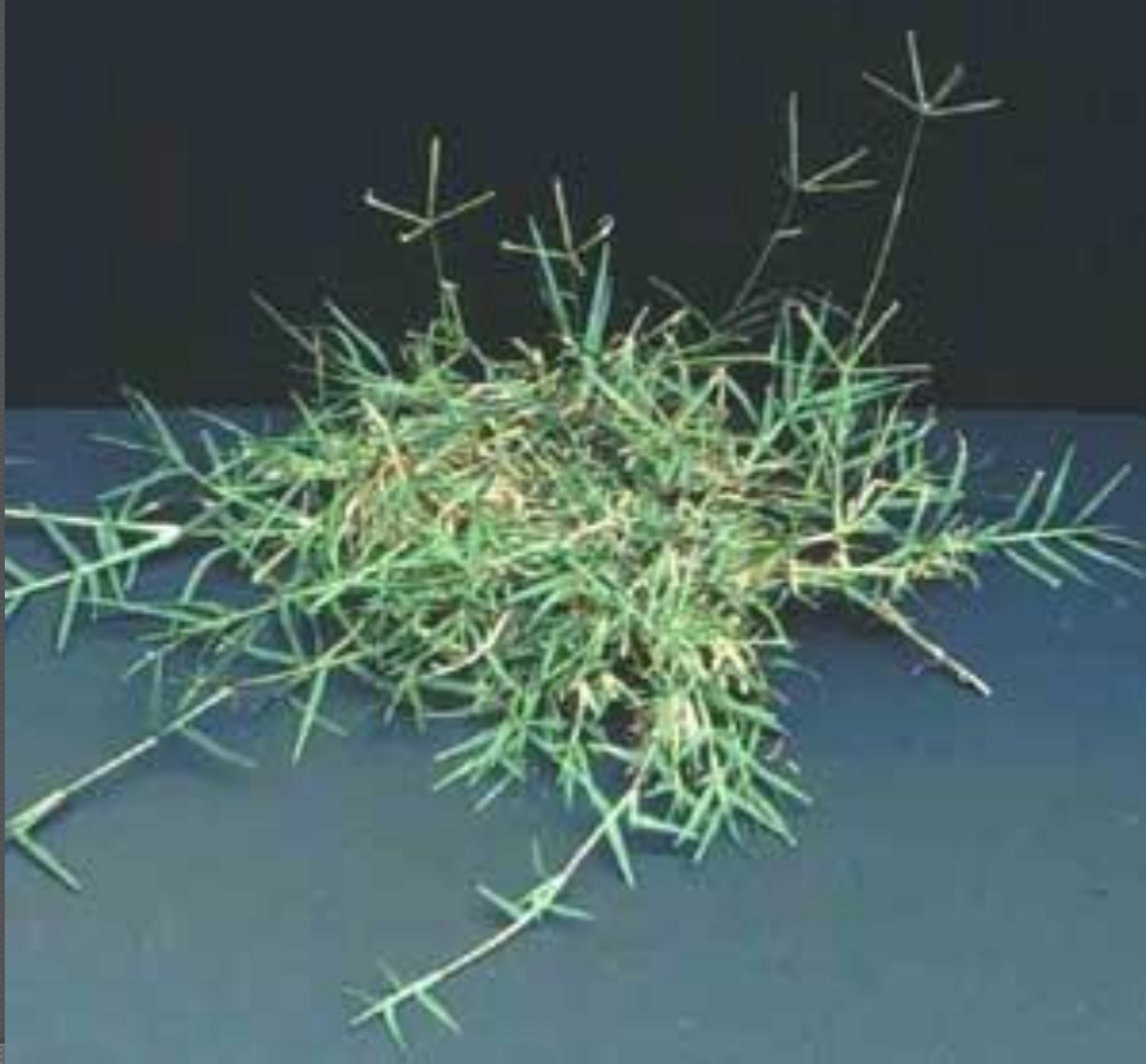
barley





8.0 mm

bermudagrass



The image features a white background with a blue logo for 'MBS Seed, Ltd.' at the top. The logo consists of a blue-outlined arrow pointing to the right, containing the letters 'MBS' in red. To the right of the arrow, the words 'Seed, Ltd.' are written in blue. Below the logo is a black ruler with markings in inches. The word 'Inches' is printed in black at the bottom left, and the number '1' is printed at the bottom right. Numerous golden-brown wheat seeds are scattered across the entire scene, some resting on the ruler and others floating in the air.

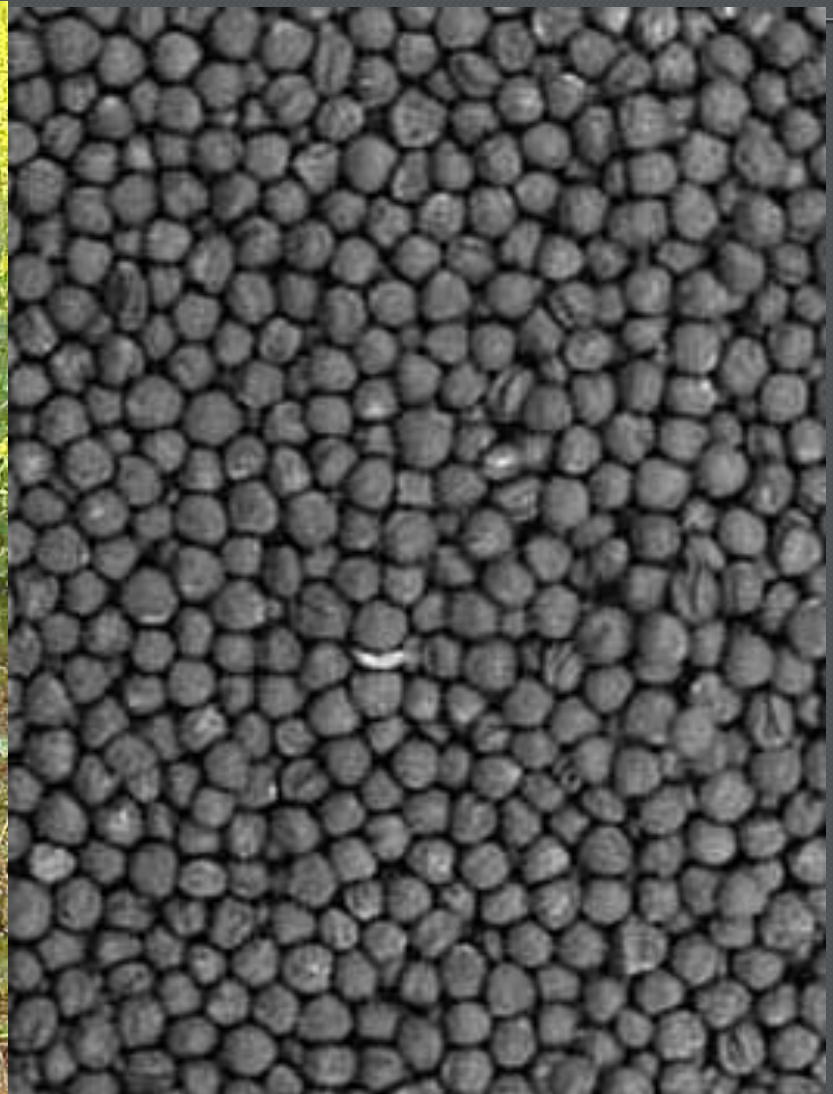
MBS

Seed, Ltd.

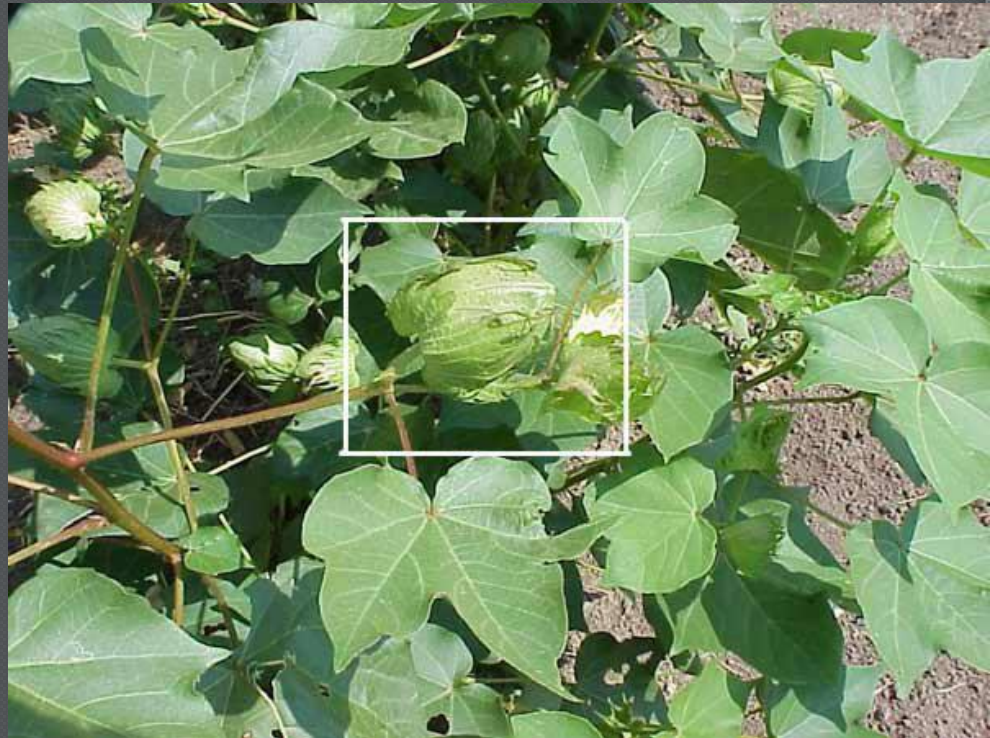
Inches

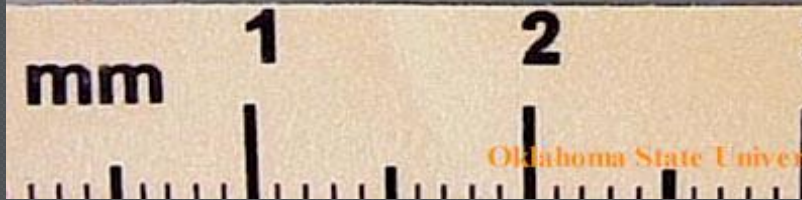
1

canola



cotton





cowpea



Oklahoma State University, 2010



dent corn



Oklahoma State University, 2000

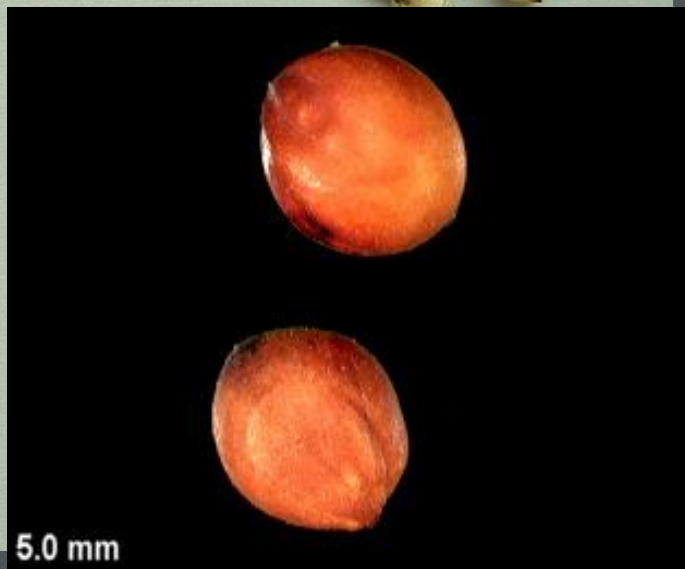


forage sorghum



grain sorghum





5.0 mm

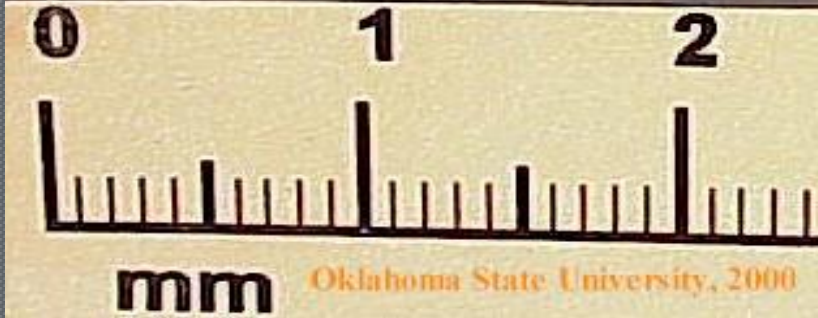
green mungbean



Oklahoma State University, 2000



Oklahoma State University, 2000



guar



GUAR



hairy vetch



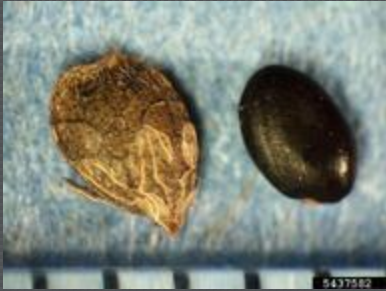


© 1998, Oregon SL Univ.



Korean lespedeza





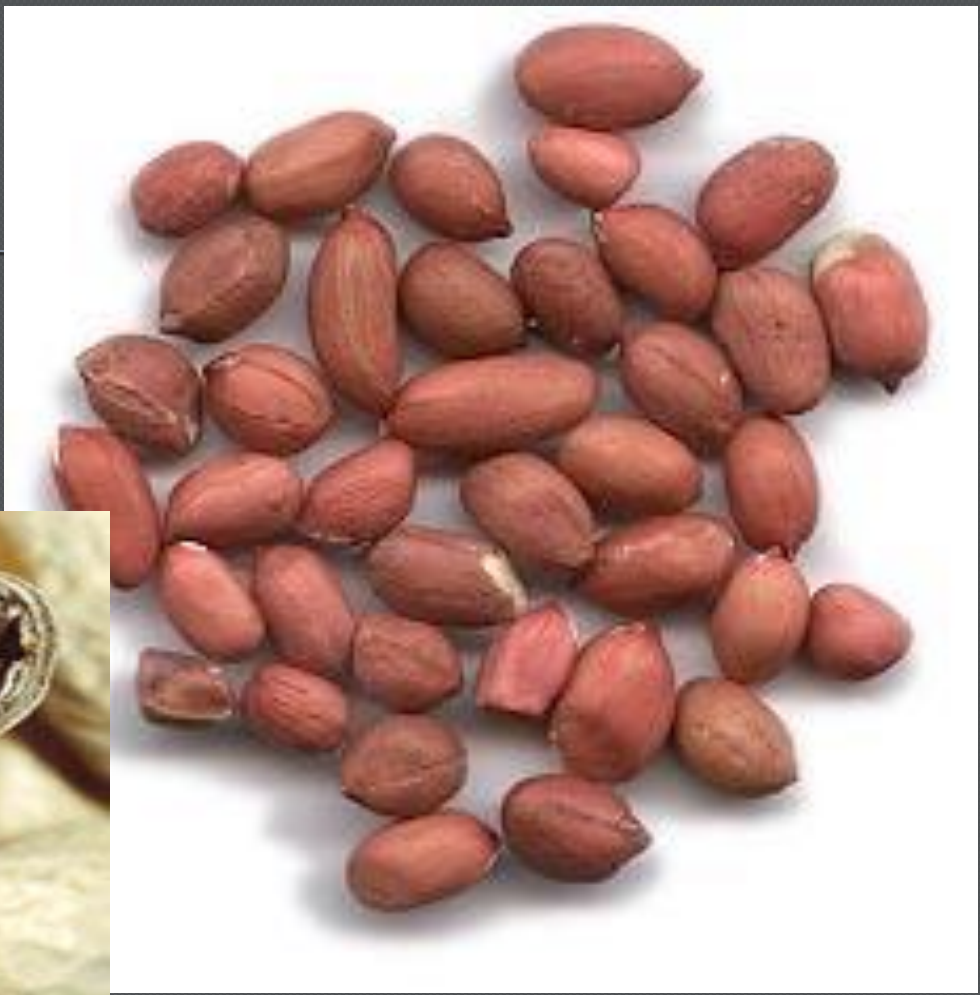
oat



peanut



Ok



rye



Oklahoma State University, 2000



Oklahoma State University, 2000



sesame





soybean





safflower







sunflower



sweetclover





Oklahoma State University, 2000

triticale





wheat





0

1

2

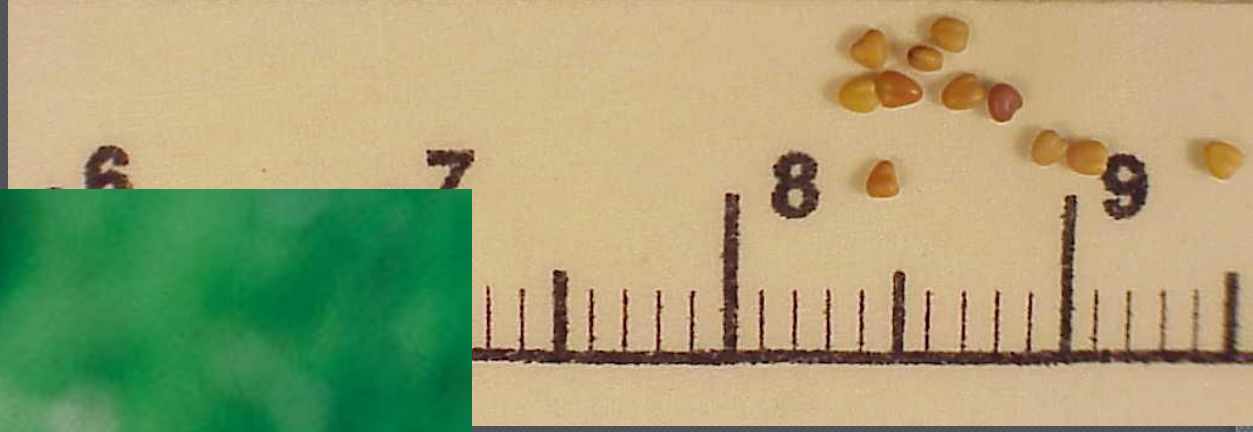
3

4

white clover



Oklahoma State University, 2000



Weeds

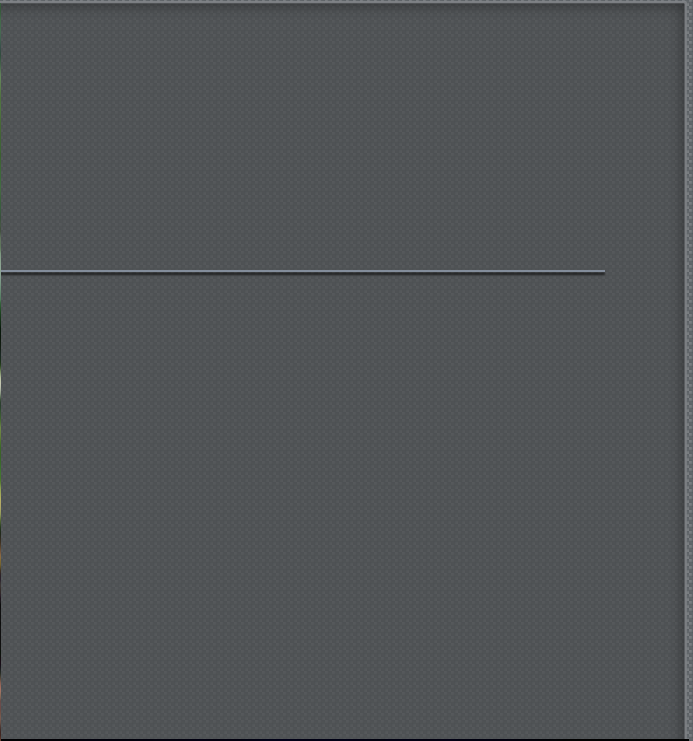
cheat





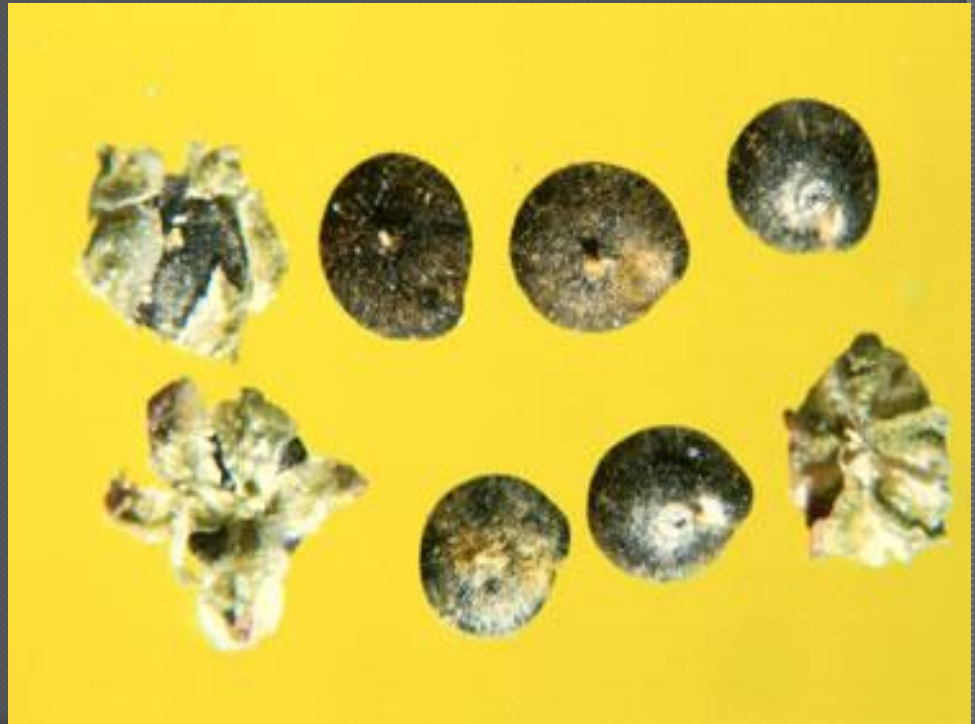
cocklebur





common lambsquarters





common sunflower



curly dock





1.8 mm



dodder



field bindweed





3.8 mm

giant ragweed





10.5 mm

horsenettle

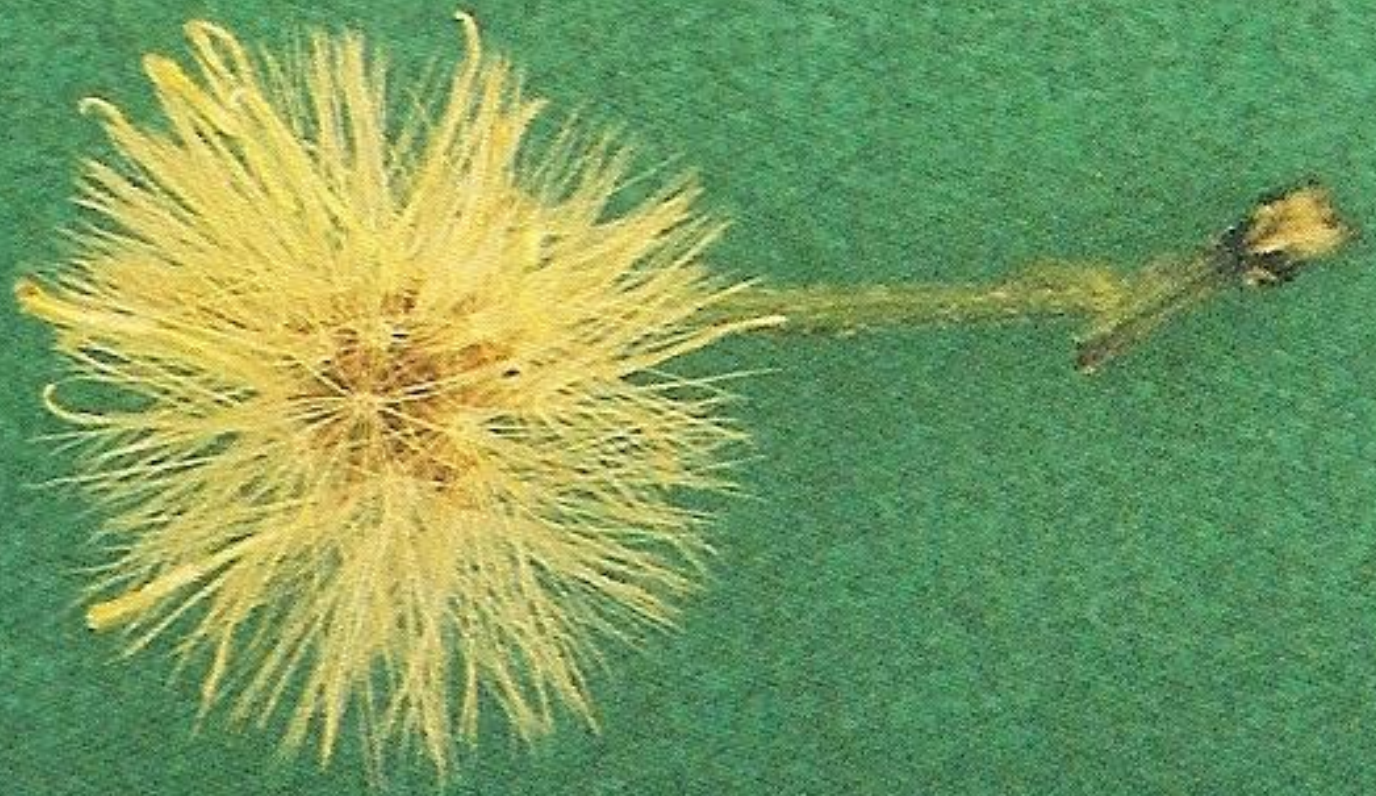
Virginia Tech Weed ID Guide





horseweed





johnsongrass





jointed goatgrass



kochia





large crabgrass





perennial sowthistle





prickly sida



5438131



Copyright 2003, University of Illinois

puncturevine





redroot pigweed





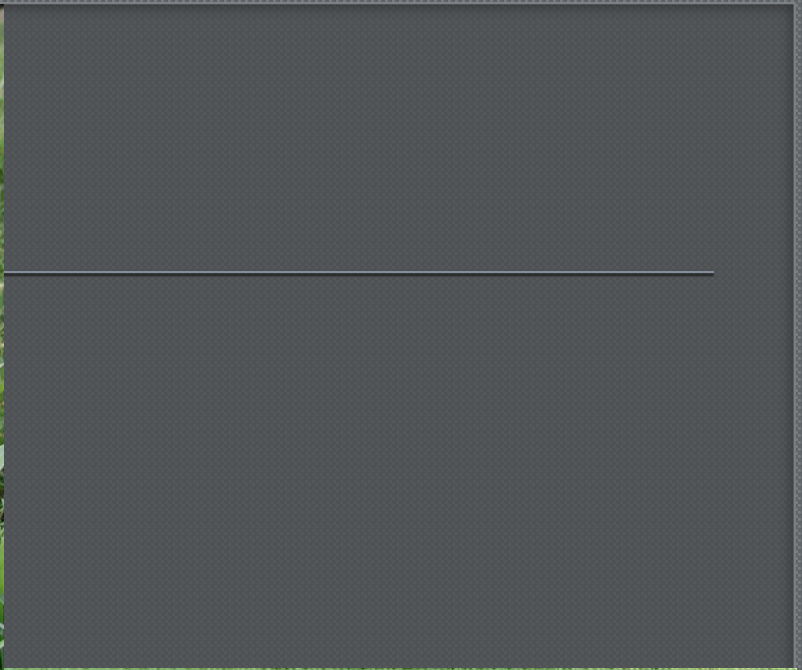
Russian thistle







sandbur



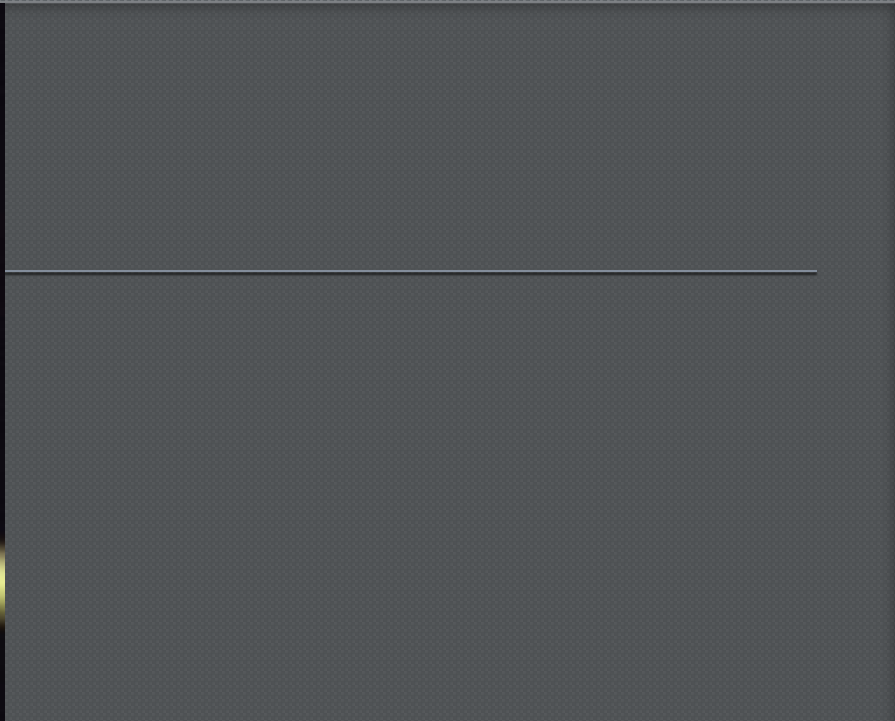
silverleaf nightshade





velvetleaf





3.0 mm

wild carrot





wild oat





yellow foxtail





yellow nutsedge



