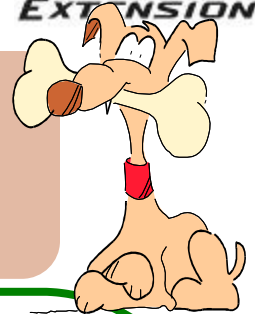


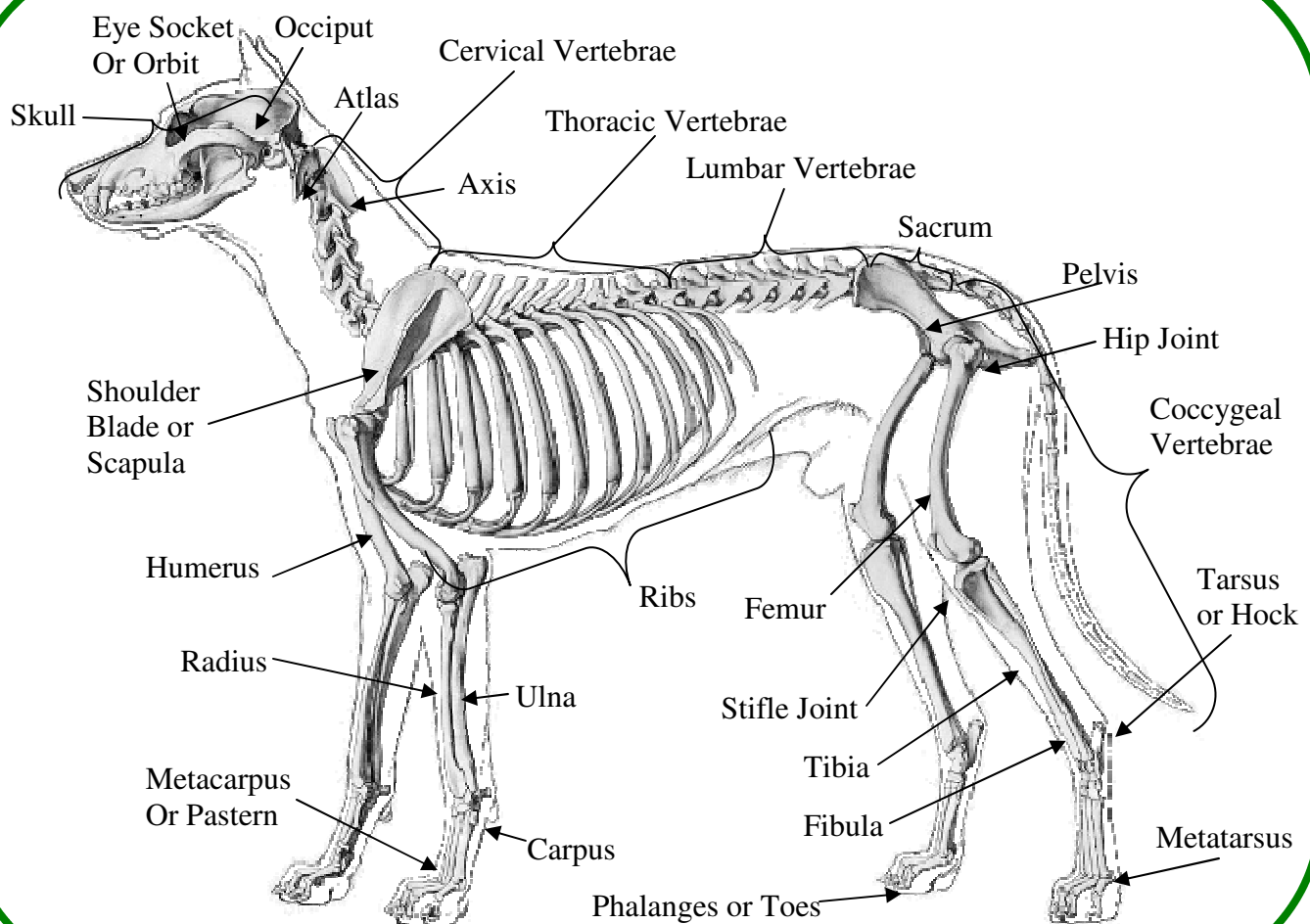


OKLAHOMA 4-H

SKELETAL SYSTEM OF A DOG



Bones have two purposes, they provide structure that lets your dog stand up and they provide protection to many of your dog's delicate organs. Did you know your dog's bones are alive? Being alive is the reason they are able to grow as your dog ages and heal when they are broken. See if you can find where these bones are on



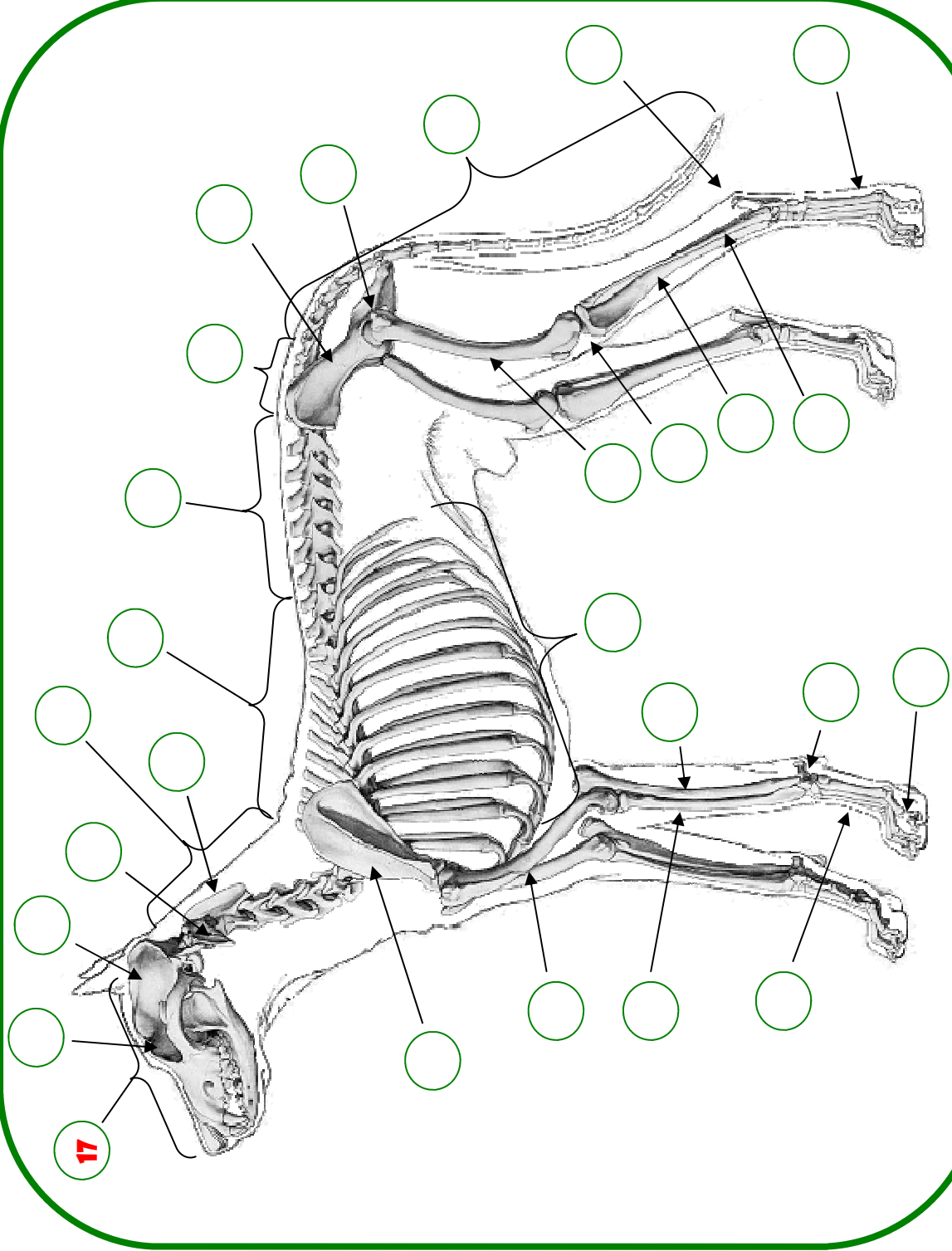
Ellenberger, Wilhelm. Baum, Hermann. 1889 and 1911-1925. Animal anatomical engraving "Handbuch der Anatomie der Tiere für Künstler" Hermann Dittrich, illustrator. University of Wisconsin Digital Collections. <http://digioll.library.wisc.edu/Science/subcollections/VetAnatImgsAbout.html>

Prepared by Stephen Beck
Assistant Extension Specialist, 4-H
Companion Animal Programs

For more information about the 4-H Dog Program log on to
<http://oklahoma4h.okstate.edu/>

Oklahoma State University, U. S. Department of Agriculture, State and Local governments cooperating. Oklahoma State University in compliance with Title VI and VII of the Civil Rights Act of 1964, Executive Order 11246 as amended, Title IX of the Education Amendments of 1972, Americans with Disabilities Act of 1990, and other federal and state laws and regulations, does not discriminate on the basis of race, color, national origin, gender, age, religion, disability, or status as a veteran in any of its policies, practices, or procedures.

BODY PARTS I.Q. Your dog's skeletal system provides the body's framework and structure as well as protects many of its organs. Did you know there are over 300 bones in a dog? Can you correctly identify some of the bones on the diagram below? Use the bones list in the shaded box to match the bones in the illustration. Write the correct body part number in the circle. See example below.



BONES LIST

1. Occiput
2. Ulna
3. Hip Joint
4. Tarsus or Hock
5. Fibula
6. Radius
7. Sacrum
8. Ribs
9. Axis
10. Femur
11. Humerus
12. Lumbar Vertebrae
13. Coccygeal Vertebrae
14. Shoulder Blade or Scapula
15. Stifle Joint
16. Thoracic Vertebrae
17. Skull
18. Tibia
19. Cervical Vertebrae
20. Carpus
21. Phalanges/Toes
22. Metacarpus or Pastern
23. Atlas
24. Eye Socket or Orbit
25. Pelvis
26. Metatarsus