

# *4-H FCS Skill-a-thon Interior Design and Housing ID*



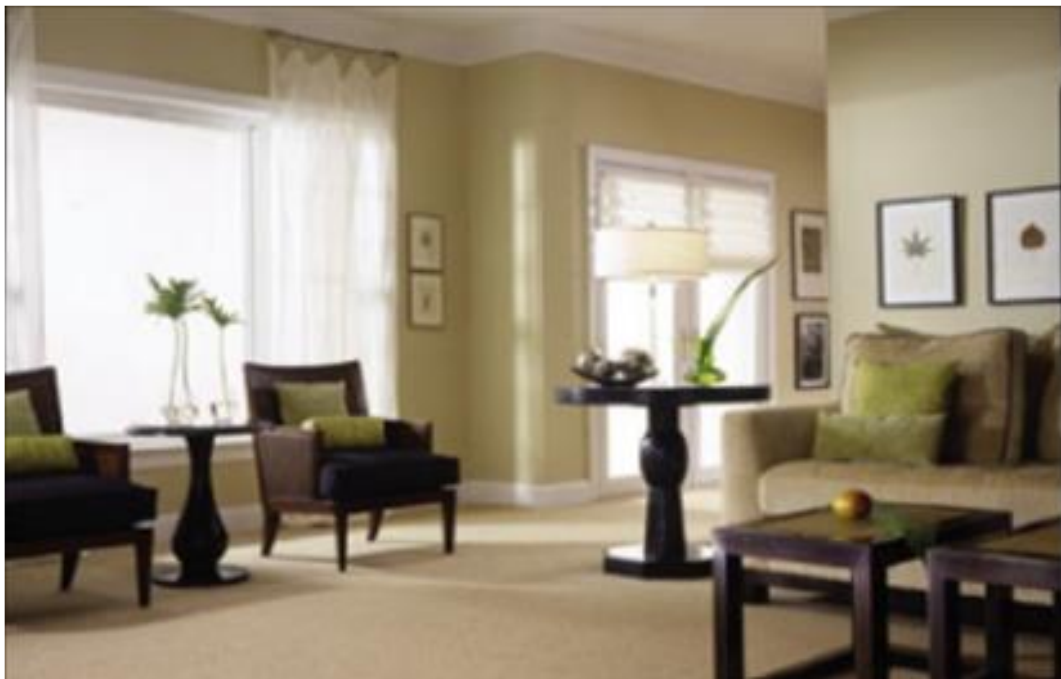
The photos shown here are only one option of what an item may look like. Other options are available.

Revised February 2025





## Carpeting/Flooring/Counters





## Bamboo

A bamboo floor is a type of flooring manufactured from the bamboo plant. The majority of today's bamboo flooring products originate in China and other portions of Asia. Moso bamboo is the species most commonly used for flooring.



## Butcher Block

are wooden countertops that come in a variety of styles and colors. Several types of woods, like maple, cherry, walnut and oak can be used for butcher block countertops

## Concrete

It's not just for sidewalks; **concrete** is a stylish choice for indoor **floors**. Its surface can be finished in various ways—with colors, stains, and aggregates—and given a textured surface or buffed until glassy. **Concrete floors** are extremely durable and easy to clean, and they resist water when properly sealed.



## Cork

Cork has excellent thermal and acoustical qualities. It's beautiful, lightweight, warm to the touch, hypoallergenic, fire and insect-resistant, stable and renewable every 8-10 years.







## Cut/Loop

This carpet carves definition with cut and loop pile. This carpet accent colors spice up floor surfaces in both formal and contemporary settings. Multicolor effect hide soil and stains making it look great between vacuuming.



**Granite** is a common type of felsic intrusive igneous rock that is granular and phaneritic in texture. Granites can be predominantly white, pink, or gray in color, depending on their mineralogy. The word "granite" comes from the Latin *granum*, a grain, in reference to the coarse-grained structure of such a holocrystalline rock. Strictly speaking, granite is an igneous rock with between 20% and 60% quartz by volume, and at least 35% of the total feldspar consisting of alkali feldspar, although commonly the term "granite" is used to refer to a wider range of coarse-grained igneous rocks containing quartz and feldspar.



## Hard Wood

Wood flooring is any product manufactured from timber that is designed for use as flooring, either structural or aesthetic. Wood is a common choice as a flooring material and can come in various styles, colors, cuts, and species.

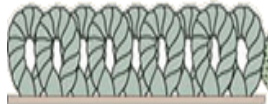


## Laminate

Laminate flooring (also called floating wood tile in the United States) is a multi-layer synthetic flooring product fused together with a lamination process. Laminate flooring simulates wood (or sometimes stone) with a photographic applique layer under a clear protective layer.

## Loop-Pile (Berber)

Loop-pile carpet has wool like look and rugged loop surface. The loop pile carpet wears well and is suited for casual rooms with lots of traffic and activity. Tight loop texture helps hide footprints and vacuum marks. Subtle patterns fit a variety of room styles.



## Luxury Vinyl

So-called "*luxury*" *vinyl flooring* (LVF) differs from standard *vinyl flooring* in its ability to closely mimic the look of natural materials, such as wood or stone. It accomplishes this by a surface layer that has a very realistic photo-created image, combined with textures that resemble that of the real materials.



**Porcelain** is a ceramic material made by heating materials, generally including kaolin, in a kiln to temperatures between 1,200 and 1,400 °C (2,200 and 2,600 ° F). The toughness, strength, and translucence of porcelain, relative to other types of pottery, arises mainly from vitrification and the formation of the mineral mullite within the body at these high temperatures. Though definitions vary, porcelain can be divided into three main categories: hard-paste, soft-paste and bone China. The category that an object belongs to depends on the composition of the paste used to make the body of the porcelain object and the firing conditions.



## Quartz countertops

are man-made engineered stone countertops formed by combining 90% ground quartz (a natural hard mineral) with 8-10% resins, polymers, and pigments. This forms a very hard granite-like surface. ... However, the countertops are still extremely durable and non-porous.



## Reclaimed Wood

Reclaimed wood is making waves in the flooring industry. ... Lumber that has been previously used for other building projects is considered reclaimed. For instance you often see reclaimed wood taken from the sides of century old barns or the floors from 150-year-old homes.



## Textured Cut Pile

Is the most decoratively versatile cut-pile carpet, its textured surface helps hide footprints and vacuum marks. Textured pile is considered a great whole house carpet.





# *Curtain and Window Treatments*





## Bamboo Shades

Relax the look of any room with the calm and comforting Driftwood Flatweave *Bamboo Roman Shade*. Environmentally friendly semi-private textured natural *shades* (also called *bamboo blinds* *bamboo shades* or woven woods) stylishly filter light and protect your furniture from fading.



## Banner Valance

A series of fabric triangles attached to a mounting board or threaded on a rod.



## Café Curtains

Short curtains hung on a rod.





### Casing

A fabric pocket to encase a curtain rod or elastic for gathering. Usually made by folding fabric over twice and stitching basically, a hem with open ends.



### Cornice

An ornamental band for covering a curtain rod. It is made of a rigid panel covered with fabric.



**Curtains Grommet** top have feature metal open rings punched into the fabric at the top of the panels that allow them to slide along the rod easily. Their easy operation makes Grommet Curtains the perfect fit choice for draperies you want to open and close regularly.



### Drapery Hooks

When you need to quickly hang hemmed drapes or curtains, drapery hooks are an effective and easy-to-use option. The basic style of this curtain hardware staple is a single wire folded against itself – one end has a sharp prong and the other end is bent into a curved hook.



**Farmhouse Shutters** can be used both on interior or exterior. They rustic shutters that can be made of a variety of materials.



## Header

The extra fabric above the curtain rod pocket

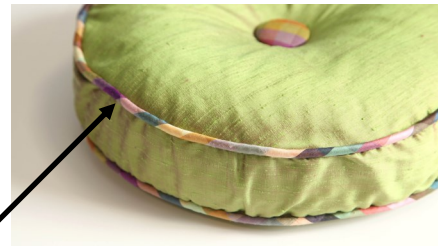


## Pinch Pleats

A style of pleat, usually triple folded, used at the header of curtain window treatments.

## Piping

A decorative edge made from bias-cut fabric strips that cover a cord.



## Plantation Shutters

are window coverings made of slats or louvers that can be tilted to control light and privacy. They are installed inside a window frame and can be opened and closed like doors.





## Pleater Hooks

Product description. These traverse **pleater** 4 end **hooks** are designed to used with multi-pocket **pleater** tapped drapes and curtains. To form pleats, fold tape and fabric accordion style. Slide fingers of **hook** into every other pocket.



## Roman Shade

A window shade made from fabric that hangs flat when down but folds like an accordion when raised.



## Spring Tension Rod

An adjustable rod that fits inside the window frame





## Valance

A top window treatment that can stand-alone or be mounted over curtains

## Wooden blinds

are window coverings made of horizontal or vertical slats of wood that are mounted in a frame. They can be operated with a cord or motorized.



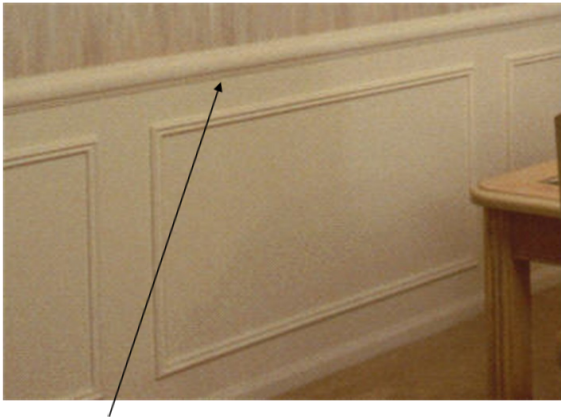


# *Decorative Woods*



## Base Board

A Narrow border that runs along the base of a wall where it meets the floor.

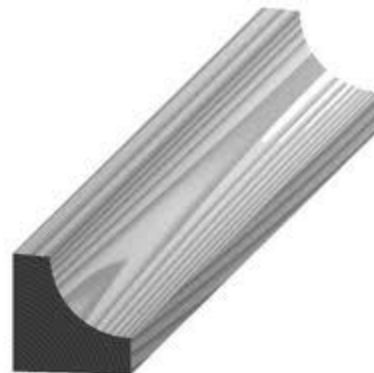


## Chair Rail

Chair rails have a decorative and practical function. Applied to a wall anywhere from 24 to 48 inches from the floor they are a beautiful accent to the room, running horizontally, while also protecting the wall from scuffs and dents from the backs of chairs.

## Cove Molding

Used where walls and ceiling meet. They have a concave profile and are often used as inside corner guards, or to hide joints. Cove molding is very similar to crown molding. The difference is in the profile. Cove molding bends inward and crown molding bends outwards.





## **Crown Molding**

A decorative strip of material used to cover transitions between surfaces or for decoration.



## **Door Casing**

Is the frame work around the doors. This type of trim is most often found on residential doors.

## **Door/Window Jamb**

The molding around the window or door. Any type of vertical support around an opening.





## **Fascia Board**

A finish member around the face of eaves and roof projections. Horizontal boards attached to rafter/truss ends at the eaves and along gables. Roof drain gutters are attached to the fascia.



## **Quarter Round**

A variation is a base shoe, a quarter of an ellipse. Typically used as a flooring joint between the flooring and the baseboard, quarter round is not a requirement for flooring, but in the United States, it is preferred due to its aesthetic appeal. It covers the uneven edge as flooring meets the baseboard.



## **Wainscoting**

Wooden paneling that lines the lower part of the walls of a room.

# **Paint Wall Finishes & Lighting**



## Artistic lighting design

is a way to use light to create a desired atmosphere, mood, or effect in a space. It can be used in art studios, museums, and other spaces.



## Chandelier

is an ornamental lighting device, typically with spreading branched supports for multiple lights, designed to be hung from the ceiling



## Gloss Paint

has a highly reflective appearance imparting a slick, contemporary look. They are tough, durable and stain-resistant. Gloss paints are easier to clean than lower gloss paints and are typically used in kitchens, bathrooms and on doors and cabinets exposed to fingerprints and grime.

## Matt Paint

has the advantage that it is easy to apply and hides surface imperfections.



## Recessed Lighting

A type of light fixture that is installed directly into a ceiling or wall, sitting flush with the surface, so only the visible trim and light source are apparent, creating a sleek and unobtrusive look; it's often referred to as "can lights" or "downlights" due to its design where the housing and wiring are hidden within the ceiling cavity.



## Satin paint

has some sheen to it, and is an excellent choice for hardworking rooms, like kitchens and bathrooms. It stands up exceptionally well to scrubbing and regular cleaning. However, its glossiness highlights wall imperfections like cracks, divots or poorly patched areas.



## Sconce Lighting

is a type of wall-mounted light fixture that can be used for both decoration and illumination. Sconces can be used in many spaces, including hallways, bathrooms, bedrooms, and living rooms.

## Track Lighting

Is a type of ceiling light system where individual light fixtures are attached to a track or rail, allowing you to position them anywhere along the track and point them in different directions to customize the lighting in a space; essentially giving you flexibility to highlight specific areas or features within a room with focused light.





The background of the slide is a close-up photograph of a purple fabric, possibly silk or satin, with deep, diagonal folds and creases that create a sense of texture and depth. The lighting highlights the ridges of the folds, giving the surface a three-dimensional appearance.

# *Material*





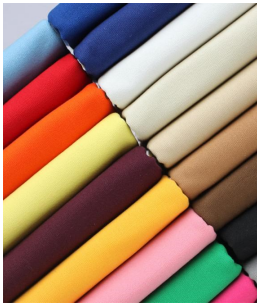
## Brocade

A rich fabric with an embossed design, usually gold or silver.



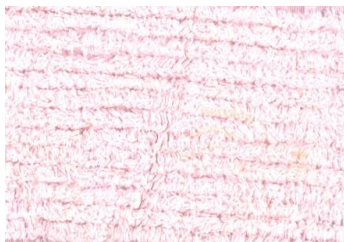
## Burlap

It is a loosely constructed, heavy, plain weave fabric made from jute fiber. It is used as a backing for carpet and may even appear as a drapery fabric.



## Canvas

Modern canvas is usually made of cotton or linen, along with polyvinyl chloride (PVC), although historically it was made from hemp. It differs from other heavy cotton fabrics, such as denim, in being plain weave rather than twill weave. Canvas comes in two basic types: plain and duck. The threads in duck canvas are more tightly woven. The term *duck* comes from the Dutch word for cloth, *doek*. In the United States, canvas is classified in two ways: by weight (ounces per square yard) and by a graded number system.



## Chenille

A very soft fabric made with fluffy cotton yarns.



## Chintz

A floral printed cotton fabric.





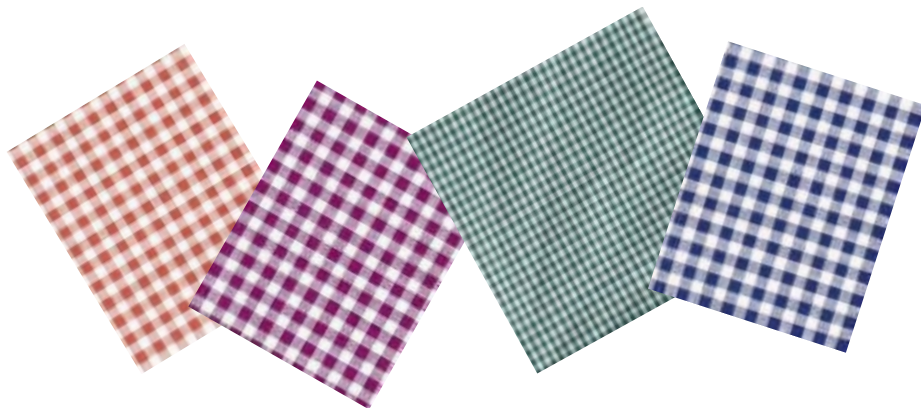
## **Damask**

A woven fabric made from wool, silk, or cotton. The special weave gives the fabric a raised appearance.



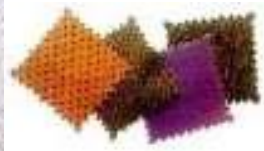
## **Denim**

A fabric in which the warp threads are usually dyed blue or black and the weft is white, so the top surface of the fabric is mainly blue or black, and the underside remains whitish.



## **Gingham**

Plain weave cotton cloth with a checked pattern.



## Interlining

A soft fabric placed between the fabric and the lining that provides insulation

## Lining

Fabric layer placed on the back of curtains to protect them from light and dust.



## Silk

A very strong, yet soft fabric, made from threads produced by silkworms

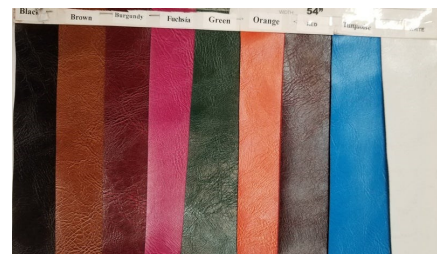


## Tapestry

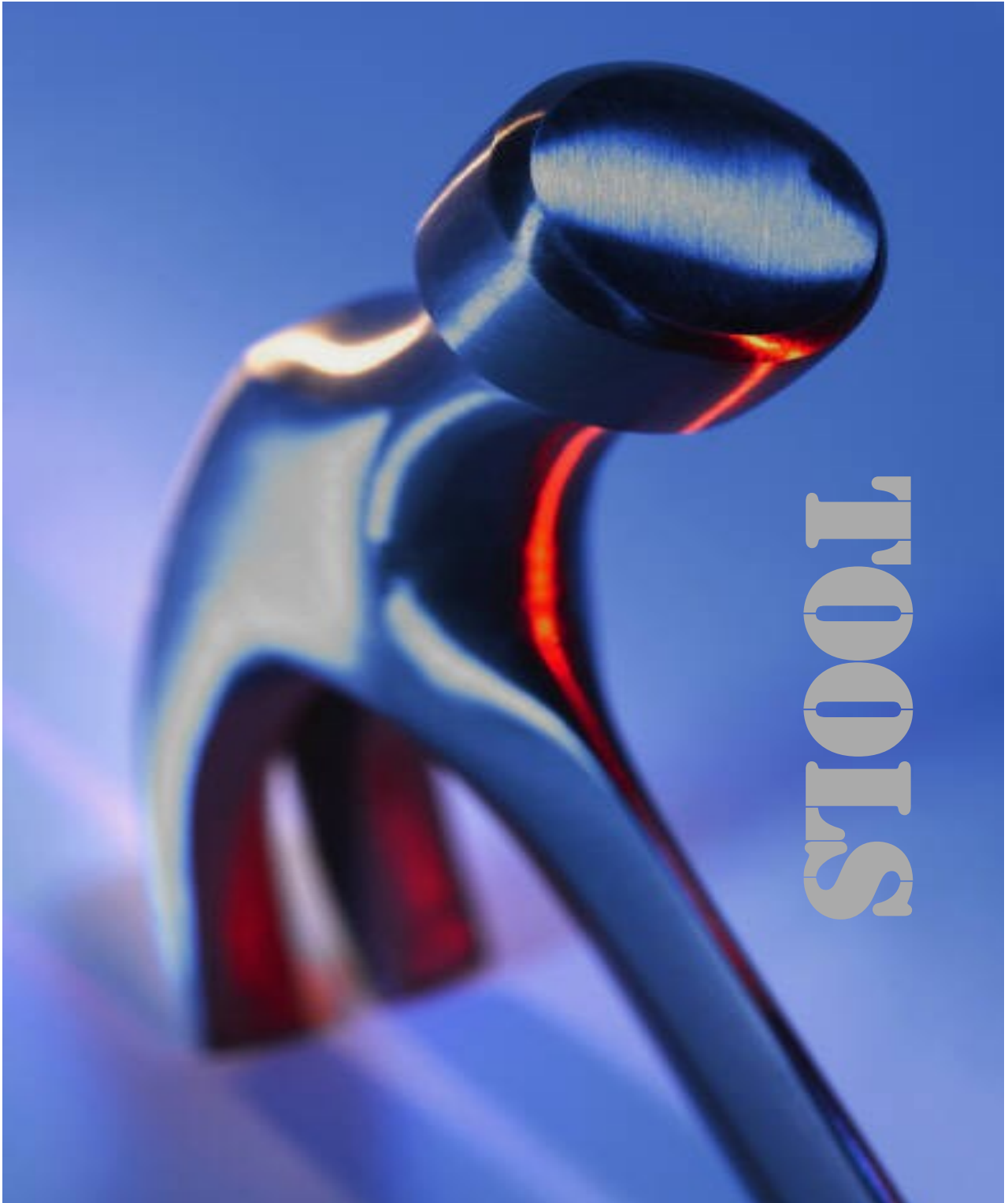
Machine woven fabric that looks hand woven

## Vinyl

Vinyl fabric, made of ethylene derived from natural gas and chlorine, offers a versatile craft material. ... Types of vinyl fabric include clear vinyl such as is used for raincoats; flannel-backed vinyl, often used for outdoor tablecloths; and other vinyl-coated fabrics available in many colors and weights











## Hammer

A hand tool that has a handle with a perpendicularly attached head of metal or other heavy rigid material, and is used for striking or pounding.



## Flathead Screwdriver

A screwdriver that has a flat blade and corresponds to slotted screws.

## Glue Gun

a handheld device that melts glue sticks and applies them to objects. It's a common tool for DIY projects, crafts, and repairs.



## Level

An instrument for determining whether a surface is horizontal, vertical, or at a 45 degree angle, consisting of an encased, liquid-filled tube containing an air bubble that moves to a center window when the instrument is set on an even plane.



## Needle-nose pliers

The long, tapering, forged head that gives needle-nose pliers their name is particularly useful in electrical work where spaces can get tight. May come with a wire-cutting blade near the hinge.



## Phillips Screwdriver

A screwdriver with four intersecting perpendicular points that corresponds to Phillips screws.

## Safety Glasses

Used to protect eyes when using an electric sander, etc.



## Slip-joint Pliers

Slip joint pliers can grasp, bend and turn wire or fasteners. Slip joint pliers are distinctive in their adjustable design. These pliers have pivot points which can be moved into two different positions. This lets the pliers handle different sizes of fasteners without losing leverage.

## Socket Set

a collection of various sized sockets, typically accompanied by a ratchet handle and other accessories, designed to tighten and loosen nuts and bolts of different sizes, making it a versatile tool for a wide range of repair tasks, particularly in tight spaces; essentially, it's a kit with interchangeable sockets that fit onto a wrench to access fasteners of different sizes and shapes.



## Staple Gun

or powered stapler is a hand-held machine used to drive heavy metal staples into wood, plastic, or masonry. Staple guns are used for many different applications and to affix a variety of materials, including insulation, house wrap, roofing, wiring, carpeting, upholstery, and hobby and craft materials.



## Tongue-and-Groove Pliers

Are commonly used for turning and holding nuts and bolts, gripping irregularly shaped objects, and clamping materials. They have serrated jaws generally set 45- to 60-degrees from the handles. The lower jaw can be moved to a number of positions by sliding along a tracking section under the upper jaw.



## Tape Measure

A tape of cloth, paper, or steel marked off in a linear scale, as inches or centimeters, for taking measurements.

**Upholstery tacks** and nails have two purposes: to attach padding or material to furniture and to add decorative accents. Most are made for indoor use, so they're not rust-resistant. If you need to clean them, all you have to do is gently rub them with a dry, soft cloth.



## Wire Cutter

A tool used for cutting wire.



## Wrench

Open-end wrench or open-ended spanner: a one-piece wrench with a U-shaped opening that grips two opposite faces of the bolt or nut. This wrench is often double-ended, with a different-sized opening at each end.

# PAIN







### **Paint Brush, Natural Bristle**

Natural bristle brushes are made from animal hair. Natural bristle brushes may only be used with oil-based paints.



### **Pad Applicator**

Small pad with a handle on the back that is used to apply paint.



### **Roller**

A device used for applying paint consisting of a cylinder attached to a handle and a pad which fits over the cylinder.

### **Roller Tray**

A container that holds paint when using a paint roller.





### **Paint Shield/Guide**

Also known as a trim guard. Used primarily in corners where wall meets ceiling or where two walls meet that are not painted the same color.



### **Paint Brush, Synthetic Bristle**

They are nylon or nylon/polyester. Used for latex paint, but they can work with oil products as well. It is advisable to dedicate a synthetic bristle brush to either oil- or water-based paint use and not switch between paint types with the same brush.

# *Doors/Window & Building Materials*

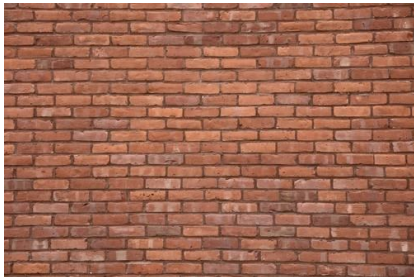
## **Awning Window**

This versatile style is hinged at the top to open out from the bottom in an upward swing.



## **Bifold Door**

A door made up of multiple panels that are hinged together, allowing them to fold back on themselves and stack neatly against a wall when opened, essentially acting like a "concertina" style door; they are often used to create large openings by sliding the panels to one side, commonly seen in closets or to connect indoor and outdoor spaces.



## **Bricks**

are rectangular building blocks used to construct walls, pavements, and other structures. They are typically made of clay, concrete, sand, or lime, and are held together with mortar.

## **Dutch Door**

A door that's split in half horizontally, allowing the top half to open while the bottom half remains closed. They're also known as half doors, double-hung doors, or stable doors.





## Double Hung Window

The most common type of window, consisting of an upper and lower sash



## French Door

A door of light construction which has glass panes extending for most of its length. They are usually fitted as a pair instead of a single door and French doors are sometimes referred to as French windows.



## Garden Window

Similar to bay windows and bow windows, a garden window protrudes outward from the wall of your home. A garden window acts almost like a mini-greenhouse as well as a window, with a three-dimensional glass structure and an extended, shelf-like sill for your plants.



## Sliding Door or Gliding Door

where's the difference? It isn't immediately obvious at first glance because the bottom line is that both words refer to the same thing – a door that moves horizontally without swinging open, helping to enlarge your room and save space.





## Palladian Window

A series of windows with an arch on top

## Pass Through Window

a type of window that slides or folds open and closed, or cranks open and closed, to allow for easy access to the indoors and out-



## Rock, or Natural Stone

A building material because of its exceptional durability, resistance to weather and fire, low maintenance needs, aesthetic appeal with a variety of colors and textures, and the ability to withstand heavy loads, making it a long-lasting and reliable choice for construction projects, especially when considering its lifespan compared to other materials.

## Screen Door

A door with a wire mesh covering that allows air and light to pass through while keeping out insects and other small objects. Screen doors are often installed on the outside of a regular door.



## Siding

A material that covers the exterior of a house to protect it from the elements and enhance its appearance. It's usually made of boards or sheets, but can also be made from other materials like stone, fiber cement, or metal.





## Slider Window

Horizontal Slider windows open with the sash sliding left or right. Some people find sliding windows easier and faster to open than crank-style windows. Since they open and close without protruding, horizontal sliders are an excellent choice for rooms facing walkways, porches or patios.

**Solar Panels** collect clean renewable energy in the form of sunlight and convert that light into electricity which can then be used to provide power for electrical loads.



## Storm Door

is a type of door that is installed in front of an exterior access door to protect it from bad weather and allow ventilation. Storm doors generally have interchangeable glass panels and window screen panels to provide visibility and prevent flying insects from entering the home.

## Stucco

A cement-based building material that's applied to walls and ceilings as a decorative coating or finish. It's made from a mixture of sand, cement, lime, and water, and it's known for being durable and versatile.





### **Transom Window**

A small window positioned directly above a door or another window, sitting on the horizontal beam (called a transom) that separates the top of the door/window from the wall above it; essentially, it's a decorative window that provides additional natural light to a space by being placed above an existing opening.



Oklahoma State University, as an equal opportunity employer, complies with all applicable federal and state laws regarding non-discrimination. Oklahoma State University is committed to a policy of equal opportunity for all individuals and does not discriminate based on race, religion, age, sex, color, national origin, marital status, disability, or veteran status with regard to employment, educational programs and activities, and/or admissions.